



SEPTEMBER 2025

STRUCTURAL ENGINEERS ASSOCIATION OF COLORADO

NEWSLETTER



IN THIS EDITION

PRESIDENT'S MESSAGE

2025 ANNUAL MEETING

ANNUAL MEETING SPONSOR AD

**SEAC SE3 COMMITTEE
MENTAL HEALTH WORKSHOP**

**SEAC & SEI COLORADO
2025 FALL SEMINAR**

SEAC YMG COMMITTEE EVENTS

SEAC STRATEGIC PLAN

**SEAC EDUCATION COMMITTEE
EVENTS**

SEAC WIND COMMITTEE PROJECT

**GINGERBREAD BRIDGE
COMPETITION**

PRESIDENT'S MESSAGE

Thank you to our Steel Committee and our Rocky Mountain Steel Construction Association (RMSCA) colleagues for their insightful presentation on Rooftop Screen Walls.



In addition to the presentation, they wrote a white paper on the Design and Construction Considerations of Rooftop Screen Walls that can be found on the SEAC website under "Publications." The next SEAC event will be our Annual Meeting on September 25th. I hope many of you join us for a night of networking, celebration, and friendly trivia competition.

I am also thrilled to announce the release of the 2025 SEAC Strategic Plan! This plan is the culmination of numerous conversations and retreats, and I want to thank the SEAC members who made this guideline possible: Katie Athens (Courtright), Greg Black, Jim Foreman, McKenzie Glass, Lacey Goetz, Evan Hammel, Scott Hargrove, Max Lehman, Julian Lineham,

EMPLOYMENT AD

FALL SEMINAR EXHIBITORS/SPONSORS

EXHIBITOR/SPONSOR ADS

NEWSLETTER AD OPPORTUNITIES

SEAC COMMITTEES

2025 CALENDAR OF EVENTS

2025 PROJECT TOUR IDEAS

SPONSORSHIP OPPORTUNITIES

2025 SEAC BOARD OF DIRECTORS

WELCOME NEW MEMBERS

Megan Guthrie

University of Wyoming

Akshith Joginpally

University of Cumberlands

Cody Mattson

Walter P Moore

Michael O'Brien

Martin/Martin

Pelle Oberg

KL&A Engineers and
Builders

Alex Reil

Colorado School of Mines

Nicholas Romero

University of Colorado
Denver

Clayton Sumner

Benesch

Brian Lobmeyer, Peter Marxhausen, Chad Mitchell, Kim Olson, and Jeannette Torrents. The Strategic Plan was developed to help the organization evolve to fulfill the mission of SEAC in the context of the current and near future environment in which structural engineers practice. The strategic plan is intended to serve as a reference guide for future Boards of Directors (BOD), bringing focus and continuity to the long-term strategic development of the organization. Check out the summary of the Strategic Plan in this newsletter to learn more.

Looking ahead to the Fall, SEAC members are going to be active! The NCSEA Summit will be held in New York City in October, and at least six SEAC members will be presenting. I also want to extend my congratulations to the two winners of the SEAC Summit travel scholarships. Cash Cota has been selected for the YMG Summit Scholarship, and Meg Riley has been selected for the Susie Jorgensen Summit Scholarship. Please join me in thanking both Cash and Meg for their contributions to SEAC. Following the Summit, SEAC will be hosting the expanded Fall Seminar in November. The seminar will be all day with multiple tracks and a CSI party in the evening. You will not want to miss out on this incredible event.



Jordan Jarrett, Ph.D., P.E.



2025 SEAC ANNUAL MEETING

Sponsored By:



**DRAKE-
WILLIAMS
STEEL**

BUILDING VALUE | EMPLOYEE-OWNED



2025 SEAC ANNUAL MEETING

**PPA EVENT CENTER
2015 DECATUR ST.
DENVER, CO 80211**

25 **THURSDAY
SEPTEMBER
2025**
5:00 PM - 8:00 PM

Member: \$40 Guest of Member: \$40 Non-Member: \$65

Registration fee includes two complimentary drink tickets.

JOIN US IN HONORING

Scott Hargrove

Elias Hendricks

Philip Taylor

Chad Mitchell

Tom Soell

as SEAC recognizes their contributions to the association and the engineering industry.

The Structural Engineers Association of Colorado (SEAC) invites you to our highly anticipated 2025 Annual Meeting - an evening dedicated to honoring our members' contributions, sharing the state of the association, announcing the 2026 Board of Directors candidates, and enjoying an engaging presentation. More than just a meeting, this annual gathering is a chance to connect with colleagues and industry peers, share experiences, and celebrate the unique challenges and successes of structural engineering.

REGISTRATION DEADLINE: SEPTEMBER 15, 2025.

Featured Speaker & Interactive Competition

We are excited to welcome **Peter Marxhausen, M.S., P.E.**, a recognized authority on structural failures, practice, laws, and ethics. He will lead us in a fun "Jeopardy" game that you can participate in using your smart device - testing your knowledge in four categories:

- General Engineering
- Structural Engineering
- Laws & Regulations
- Ethics

This lively activity will provide valuable insights into lessons learned from real-world failures, current best practices, and the ethical responsibilities engineers face today. A PDH for 0.5 will be provided for all attendees which can count towards any ethics requirement.

It is open to spouses, guests, and anyone with a device. It will be a fun way to learn, compete, and connect — **with prizes on the line valued up to \$1 million!**

SCHEDULE

5:00 p.m. - 5:45 p.m. Cocktails
5:45 p.m. - 6:30 p.m. Dinner
6:30 p.m. - 7:00 p.m. Awards/State of Assoc/Board Candidates
7:00 p.m. - 8:00 p.m. "Jeopardy" Competition & Prizes

MENU

Chicken & Vegetable Kabobs
Mixed Green Salad
Rice Pilaf, Green Beans
Dinner Rolls
Cookies, Brownies, Desert Bars

REGISTER NOW



2025 SEAC ANNUAL MEETING SPONSOR



REMARKABLE
HISTORY

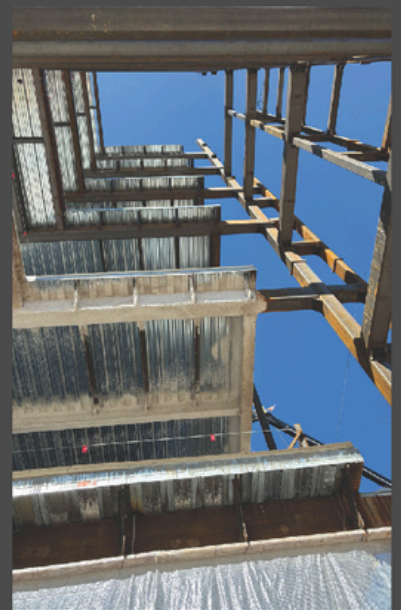


IMPRESSIVE
RESUME

290 Employee-Owners dedicated to

BUILDING VALUE

for Customers and Community, since 1882.



WWW.DWSTEEL.COM

303-721-9500



SEAC SE3 COMMITTEE WORKSHOP

MENTAL HEALTH = BUSINESS HEALTH

Creating a Resilient Workforce



> REGISTER NOW



Thursday, September 11, 2025



10:00 am - 3:00 pm
Lunch will be provided



Simpson Strong-Tie
5725 N Pecos St. Suite 100
Denver, CO 80221

ABOUT THE WORKSHOP



Firm Mental Health Starts with Its Company Leaders

This **interactive, firm-focused workshop** will help firm leaders:

- Understand how mental health and emotional well-being directly impact productivity, creativity, and team dynamics
- Learn practical tools to reduce stress, prevent burnout, and create a more resilient workforce
- Discover how fostering a culture of empathy and openness leads to higher employee satisfaction and retention
- Recognize early signs of mental health concerns and respond in ways that support both individuals and organizational goals

When employees feel seen, supported, and empowered, they perform better, collaborate more effectively, and are more likely to stay. This workshop equips you with the knowledge and tools to make that a reality in your workplace.

Ready to invest in your people and your bottom line? Let's build a workplace where people thrive, and business follows.

REGISTRATION



Large Office (> 50 employees) - includes attendance for up to three people
SEAC Members: \$250
Non-Members: \$350

Small Office (< 50 employees) - includes attendance for up to two people
SEAC Members: \$150
Non-Members: \$225

Who Should Attend?

- President or CEO
- Mid-to-High Level Manager
- HR Director or HR Representative

Space is limited, so sign up soon!

Registration Deadline:
September 4, 2025

ABOUT THE WORKSHOP LEADERS



David Hall | MA, LPCC, NCC

David is a private practice counselor and former structural engineer with 15 years in the industry. He helps professionals in demanding careers manage stress, avoid burnout, and improve emotional well-being. With a counseling degree from Denver Seminary and a warm, practical approach, David blends evidence-based tools with real-world insight. He's also a husband and father of four who understands the pressures of balancing work, life, and relationships.



Kevin Yu | MA, LPC

A former engineer, Kevin made the switch to full time counseling in 2013. He has worked in community mental health, hospitals, group practice, and since 2021 his own private practice Verus Counseling Group. Kevin works with kids and families, couples and individual clients. He is passionate about helping people find true, authentic and real connection with themselves and with others. In his free time, he likes to eat good food, read, and play board games.



Lori Hartman | MA, CPCC

Lori holds a Master's in holistic health education and is a certified life and mental health coach with 20+ years of experience. She supports professionals - including those in engineering and leadership roles - in managing stress, preventing burnout, and enhancing performance through evidence-based strategies that promote clarity, resilience, and long-term well-being in demanding environments.

THANK YOU TO OUR DONORS





2025 FALL SEMINAR

SEAC & SEI COLORADO 2025 FALL SEMINAR

Westin Westminster

10600 Westminster Blvd.
Westminster, CO 80020

**6.0 Professional Development
Hours Offered***



**6 THURSDAY
NOVEMBER
2025
7:00 AM - 9:30 PM**



**STRUCTURAL
ENGINEERING
INSTITUTE**
Colorado Chapter



7:00 AM - 8:00 AM	Breakfast/Networking	1:00 PM - 2:00 PM	Session #3
8:00 AM - 9:00 AM	Keynote Presentation	2:15 PM - 3:15 PM	Session #4
9:15 AM - 10:15 AM	Session #1	3:15 PM - 3:45 PM	Break/Networking
10:15 AM - 10:45 AM	Break/Networking	3:45 PM - 4:45 PM	Session #5
10:45 AM - 11:45 AM	Session #2	4:45 PM - 5:30 PM	Exhibit Hall Prizes
11:45 AM - 1:00 PM	Lunch/Networking	5:30 PM - 9:30 PM	CSI Reception, Dinner, & Party

REGISTRATION FEES

	Early Bird	After 9/26
SEAC & SEI Colorado Members (Includes CSI Reception, Dinner, & Party)	\$295	\$330
Non-Members (Includes CSI Reception, Dinner, & Party)	\$345	\$380
Additional Guest for CSI Reception, Dinner, & Party	\$50	\$50

Registration fee includes breakfast, lunch, presentations, and attendance at the CSI Reception, Dinner, & Party. Free parking is available in the hotel parking lot. This conference offers up to **6.0 Professional Development Hours (PDH)**. *PDH requirements vary per state licensing board. Attendees are responsible for verifying with their licensing board that the content meets applicable continuing education requirements.

You have the option to purchase one additional ticket for a guest to the CSI Reception, Dinner, & Party for \$50. After selecting your package and before completing your registration, click "Add Another Attendee to this Registration" to purchase the Guest CSI ticket.



2025 FALL SEMINAR

PRESENTATIONS

Structural Engineering - Indispensable to Civilization, So Why Don't We Make More Money

Presented By Keynote Speaker:

Ashraf Habibullah - Computer & Structures, Inc.

US 36 Emergency Rebuild Project - Providing a Lightweight Geofoam Design to Support Roadway Traffic

Presented By: Ben Arndt, PE - RJ Engineering and Consulting

Progress Report on NIST's Investigation of the Partial Collapse of Champlain Towers South

Presented By: Jim Harris, PE, SE, Ph.D. - J.R. Harris & Company

Engineering Excellence in Post-Tensioned Slabs: Logical Steps, Key Considerations, and Must-Have Resources

Presented By: Kyle Boyd, PE, SE - KSB Engineers

A Seemingly Improbable Crisis: The Perfect Storm at Oroville Dam

Presented By: Jeremy Begley, PE - MAPEI Corporation

Takeaways from the SEAC SE3 Mental Health Workshop

Presented By: Chad Mitchell, PE, SE - KPFF & Meg Riley, PE - Martin/Martin

Wood-Frame Shear Wall and Diaphragm Design

Presented By: Emmy Tran, PE & Alex Dukeman, PE - WoodWorks

Introduction to Railway Bridge Engineering

Presented By: Dave Fitzwater, PE - RailPros, Inc.

Load Paths and Life Paths: Lessons from a Structural Engineering Career

Presented By: Ron Manske - HDR Engineering

CROSS-US: Collaborative Reporting for Safer Structures - US *A Tool Advancing Structural Safety*

Presented By: R. Scott Silvester, PE - Simpson Gumpertz & Heger

The MSG Sphere at the Venetian: Solving Design, Fabrication and Construction Challenges with Cast Steel Connections

Presented By: Suzy Rajamoney, PE, SE - CastConnex

Building Assessments and Forensic Investigations: A Look at Modern Technology and Construction Defect Trends

Presented By: Stanley Stoll, PE - Knott Laboratory

Design Criteria and Design Constraints for Sustainability and Embodied Carbon

Presented By: Kirby Beegles, PE, SE, Erik Sanders, PE, LEED AP & Kevin Hass, PE, SE - Martin/Martin

AI Panel Discussion

Presented By: Sheng Zheng, PE - Martin/Martin

CANCELLATION POLICY

If you need to cancel your registration, requests must be made via email to administrator@seacolorado.org. No telephone cancellations/refund requests will be accepted. Cancellations received prior to October 22, 2025 will be subject to a \$75 non-refundable processing fee. No refunds will be issued after October 22, 2025 or for conference no shows. **Early registration ends September 26th. Registration Deadline is October 24th.**

REGISTER NOW





SEAC YMG COMMITTEE EVENT



SEAC YMG COMMITTEE END OF SUMMER PICNIC

Meet and network with your structural engineering peers while enjoying a picnic in the park!



18 THURSDAY
SEPTEMBER
2025
6:00 PM - 7:30 PM



Limited food
and beverages
will be
provided.

CITY PARK

2001 Colorado Blvd. Denver, CO 80205

SEAC MEMBERS: \$0

NON-MEMBERS: \$10

If you have any questions,
contact Garrett Mitchell, PE
gmitchell@cegeengineers.com



REGISTER NOW



SEAC YMG PARTNERSHIP EVENT

VOLLEYBALL TOURNAMENT

Hosted by MINES SEI GSC in partnership
with SGH, SEAC, & ASCE DENVER!

Play Volleyball!

Network!

Win prizes!

Enjoy food!

Sept
12

5PM-7PM

*Kafadar Commons
1451 Illinois Street
Golden, CO 80401*

RSVP

REQUIRED:





SEAC STRATEGIC PLAN



Structural Engineers Association of Colorado (SEAC) Strategic Plan

Approved by 2025 Board of Directors

The overall objective of SEAC is the advancement of the practice of structural engineering for the benefit of public safety and the structural engineering profession. The strategic plan aims to keep true to the founding vision of the organization and develop a plan to guide the organization.

It is intended to serve as a reference for future Board of Directors (BOD), bringing focus and continuity to the long-term strategic development of the organization. It is organized around the following key strategic initiatives and associated goals.

STRATEGIC INITIATIVE	GOAL
Membership	Expand membership to 500 members by 2026 and to 600 members by 2029
Geographic Expansion	Increase membership and leadership outside Denver Metro area
Committee Engagement	20% of membership serve on committees and 50% member engagement for SEAC activities/events by 2029
Public Relations	Increase awareness of structural engineering outside the profession
Website	Upgrade website
SE Licensure	Investigate need for SE licensure in Colorado
Outreach	Increase connection with K through college students
Recruitment and Retention	Increase recruitment and retention in Colorado SE firms by promoting people-centric policies and procedures
Sustainable Design	Promote sustainable design practices within the profession of structural engineering

GOAL: Next strategy meeting in 2029



SEAC EDUCATION COMMITTEE EVENT



Builders.
MiTek®



YOU'RE INVITED

Manufacturing Facility Tour

15 **WEDNESDAY**
OCTOBER
2025

GROUP 1 – 8:30 AM
GROUP 2 – 10:00 AM

BUILDERS COLORADO
17600 EAST SMITH RD
AURORA, CO 80011

REGISTRATION DEADLINE
OCTOBER 10, 2025

REGISTER NOW

SEAC Member: \$0 Non-Member: \$40
Registration fee includes tour and a certificate for 1.0 Professional Development Hour (PDH).

Offsite prefabrication and technology are two of the biggest topics we discuss in the construction industry. Builders Colorado location is a Pro Sales Dealer providing contractors and homeowners with all their building material needs. They have a fully stocked lumber yard, in-house truss manufacturing plant, as well as a doors and windows provider. Additional services include estimating, truss design, and wall panel design. During this plant tour, you will see and hear how the use of technology will make construction jobs and projects easier and more efficient. We hope this will be an interactive learning experience for all in attendance. A signed SEAC waiver is required from each attendee during the registration process.
Each one hour tour group is limited to 15!

YOU ARE REQUIRED TO BRING AND WEAR THE FOLLOWING PPE:

***Hard Hat *Safety Glasses *Boots *Safety Vest**



PROJECT PRESENTATION AND TOUR

SEAC SUSTAINABLE DESIGN COMMITTEE & SEAC EDUCATION
COMMITTEE PROJECT PRESENTATION & TOUR

Boulder 29 Macy's Office Conversion



The SEAC Sustainability Committee with help from the Education Committee was happy to host a project presentation and tour of the Boulder 29 Macy's Office conversion project on Wednesday, August 13, 2025. Matt Johnson (SAR+), John Brunner (JVA, Inc.), and Addison Sundeen (Saunders) provided insight on the architectural, structural, and construction features and challenges of this adaptive reuse project. We learned about the carbon savings from adaptive reuse, unique design features such as the "million-dollar wall", and lateral force resisting system retrofit challenges with converting a windowless, big-box store to a glass curtainwall office building. We concluded with a happy hour event at Twisted Pine brewing.





SEAC WIND COMMITTEE PROJECT



Wind Committee

fundraising

The SEAC Wind Committee is working on a revised Colorado wind speed study which would correctly define and fully cover the Front Range Special Wind Region (SWR). We have recently received great news regarding this project, our application for the FEMA BRIC grant has been APPROVED covering 75% of the project costs!

SEAC needs to cover the remaining 25% of the project. To date, we have received commitments for $\approx 80\%$ of the remaining funds we need. Huge thank you to our SEAC community members that have already donated!

We will continue fundraising in 2025, we are determined to meet our goal. There is still time to be involved in this crucial study. Any sponsors at Bronze Level or higher will receive recognition for their contributions online through SEAC. Any funds raised beyond the minimum required will fund additional studies. Let's see how far we can go and how much we can discover!

[CLICK HERE TO DONATE TO THE STUDY](#)





2025 GINGERBREAD BRIDGE COMPETITION



2025 GINGERBREAD BRIDGE



Colorado School of Mines

Green Center - Friedhoff Hall

924 16th Street, Golden, CO 80401

5

**FRIDAY
DECEMBER
2025**

9:00 AM - 1:00 PM

Professional Team Fee: \$50

Student Team Fee: \$0 + Stipend

9:00 AM Doors Open

9:30 AM Architectural Judging

TBA Weigh-In/Load Testing

Engineers, contractors, and students gather in Denver to load test gingerbread bridges in hopes of taking home the coveted Gingerbread Cup!

Gather your students or colleagues to design the most aesthetic and structurally sound gingerbread bridge that you can imagine. This competition puts edible bridges to the test. First the bridges are judged by a group of architects for best Architectural Design. Then the attendees get to vote on their favorite bridge in the People's Choice Competition. Finally, bridges are load tested to see which can carry the most load compared to the self-weight of the bridge (Structural Design). The first place team in Structural Design will be presented with the 2025 Gingerbread Cup! **Registration Deadline: 5:00 PM on Friday, November 7, 2025.**

[CLICK HERE FOR COMPLETE COMPETITION RULES](#)

- Student teams are eligible for supply reimbursement up to \$75
- Student teams will be provided with a structural engineer mentor upon request
- Select refreshments are provided the day of the event
- Paid parking is available on the School of Mines campus

REGISTER NOW



2025 GINGERBREAD BRIDGE SPONSORSHIPS



5 Friday
December
2025

SPONSORSHIPS

Silver Sponsor - \$200

- Company name or logo on commemorative item for each entrant
- Logo displayed on Gingerbread Bridge Competition website home page for 1 year with a link to your website
- Company logo displayed on SEAC website landing page
- Bring a banner for display at the event
- Complimentary entry to the competition for your company

Gold Sponsor - \$500

- Company name or logo on commemorative item for each entrant
- Larger logo displayed on Gingerbread Bridge Competition website home page for 1 year with a link to your website
- Company logo displayed on SEAC website landing page
- Bring a banner for display at the event
- Complimentary entry to the competition for your team

Platinum Sponsor - \$1,000

- Company name or logo on commemorative item for each entrant
- Larger logo displayed on Gingerbread Bridge Competition website home page for 1 year with a link to your website
- Company logo displayed on SEAC website landing page
- Bring a banner for display at the event
- Complimentary entry to the competition for your team
- Contribute to the SEAC YMG Summit Scholarship to send one young member to the NCSEA Summit



Sponsorship Deadline: Payment and logos due by Friday, October 24th



EMPLOYMENT AD

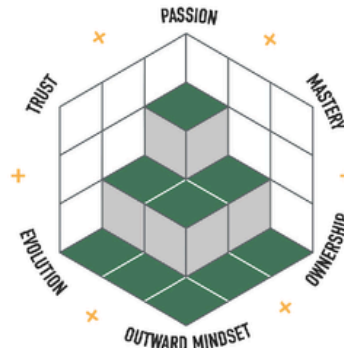


KL&A
Engineers & Builders

At KL&A Engineers and Builders, we're not just a consulting firm; we're partners in navigating your unique career journey. Join our collaborative team of engineers, construction managers, and steel detailers as we redefine engineering excellence. With a focus on sustainable design, innovation, and cost-effectiveness, your expertise will make a lasting impact on our projects and clients. If you're a passionate engineer ready to tackle challenges and drive change, let's shape the future of construction together.

WHY JOIN KL&A

KL&A offers more than just a competitive benefits package—we foster a vibrant workplace culture rooted in fun, collaboration, and community. We're deeply committed to the professional growth of our team members, providing opportunities to work on exciting, meaningful projects. Our approach includes employee driven career growth plans and comprehensive training programs designed for long-term success.



CURRENT OPENINGS

LOVELAND & GOLDEN, COLORADO

STRUCTURAL PROJECT ENGINEER

- **What you'll do:** Project Engineers serve as the vital link between Project Managers and the broader team. In this dynamic role, you'll coordinate team efforts, guide design strategies, manage project workflows, and ensure quality standards are consistently met—all while keeping projects on track and on schedule.
- **What we're looking for:** ABET accredited degree in structural or architectural engineering, 5-9 years of relevant work experience, PE/SE certification preferred, and experience on major projects of moderate scope with complex design features
- **Salary:** \$95,000 – \$106,000 Annually

STRUCTURAL ENGINEERING PROJECT MANAGER

- **What you'll do:** Project Managers are the driving force behind project success and team performance. They take ownership of financial, technical, and quality milestones, ensuring every aspect of the project aligns with client expectations and organizational goals. Through strategic oversight and proactive leadership, they deliver results that meet deadlines and exceed standards.
- **What we're looking for:** ABET accredited degree in structural or architectural engineering, 10+ years of relevant work experience with 2-3 years of project management, PE/SE certification, and experience on major projects of moderate scope with complex design features
- **Salary:** \$110,000 – \$124,000 Annually

For a complete list of our job openings, and to apply to any positions, visit www.klaa.com/careers



FALL SEMINAR EXHIBITORS & SPONSORS

FALL SEMINAR GOLD EXHIBITORS



FALL SEMINAR SILVER EXHIBITORS



FALL SEMINAR SPONSORS

Break Sponsor



Lanyard Sponsor



Lunch Sponsor



Breakfast Sponsor





FALL SEMINAR EXHIBITORS & SPONSORS

MARKETING SPONSORS



wallace
design
collective



SEAC & SEI COLORADO 2025 FALL SEMINAR



STRUCTURAL
ENGINEERING
INSTITUTE
Colorado Chapter

SPONSORSHIPS

The Structural Engineers Association of Colorado (SEAC) & Structural Engineering Institute Colorado Chapter (SEI Colorado) 2025 Fall Seminar is a full-day, three-track educational event followed by a hosted reception, dinner, & party generously provided by CSI.

Sponsorship introduces you to several new networking opportunities and provides recognition for your company or organization. **Sponsorship Deadline: September 30, 2025!**

BREAKFAST SPONSOR - \$750 (1 Remaining)

MARKETING SPONSOR - \$500

BREAK SPONSOR - \$250

SPONSOR NOW



FALL SEMINAR GOLD EXHIBITOR AD

Less **overtime**,
more **family time**.



We help structural engineers **get home on time** for dinner.



Free 30-Day Trial

enercalc.com/free-trial

800.424.2252 | enercalc.com



SINCE 1982

ENERCALC®



FALL SEMINAR GOLD EXHIBITOR AD



Product Lines & Services

- Conventional Framing
 - I-Joist, LVL/LSL, Open Web Joists, Plated Wood Trusses
- Heavy/Mass Timber
 - Glulam, Timber, CLT, MPP, T&G Decking, Logs, Assembled Trusses
- Support Services
 - Design Assist, Engineering, Project Management, 3D Modeling and Coordination



Get in Touch

303-458-1736
info@lamwood.com
www.lamwood.com
1580 W. 47th Ave, Denver, CO 80211



FALL SEMINAR GOLD EXHIBITOR AD



DOVETAIL DECK + PINTAIL™ ANCHOR

FUTUREPROOF

TODAY FOR WHATEVER COMES TOMORROW.

New construction architecture requires special consideration for the inevitability of future upgrades.

That's why modern construction projects need hanging solutions that are built for speed, versatility, and adaptability to ensure quick and seamless renovations.

To help meet that challenge, Vulcraft-Verco has developed the PinTail™ Anchor, an innovative hanging solution that works exclusively with our Next Generation Dovetail Floor Deck, and are specifically designed to futureproof today's construction projects for tomorrow's renovations.

PINTAIL™ ANCHOR THREADED ROD AND NUT NOT INCLUDED

NUCOR
VULCRAFT



NUCOR
VULCRAFT

COMPREHENSIVE FLOOR SOLUTIONS
DOWNLOAD OUR **NEW SPEC GUIDE** TODAY

Whether you're optimizing for strength, efficiency, or architectural impact, this guide helps ensure your designs align with the latest standards, innovations, and solutions Vulcraft has to offer.



SCAN TO DOWNLOAD

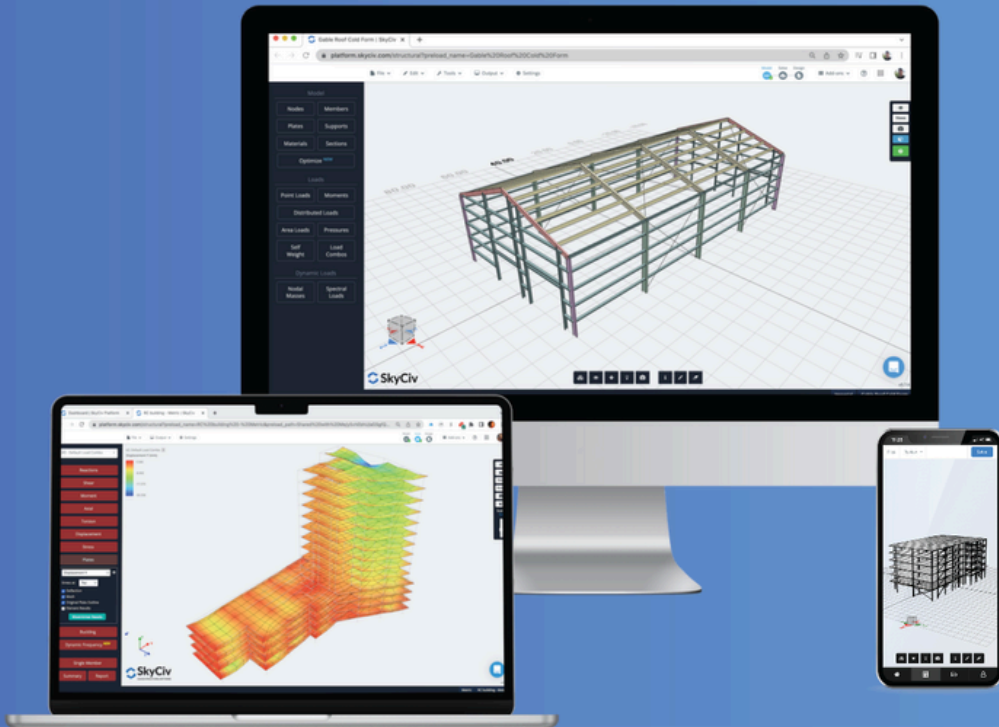


FALL SEMINAR GOLD EXHIBITOR AD



POWERFUL - EASY - ONLINE

Advanced Structural Engineering Software with API Capabilities



ALL-IN-ONE

Everything in one place: analysis and 80+ design tools.
All included in a single subscription.



ENGINEERING SUPPORT

Get support from our engineers in under 30 minutes.
Chat live, share your model and get fast answers.



EASY TO LEARN

SkyCiv's interface is built for speed and simplicity.
Learn the software in less than 2 weeks.

Trusted by:





FALL SEMINAR GOLD EXHIBITOR AD

Expansive soil causes structural damage.

When clients demand structural stability for their business, engineers rely on VoidForm's systems to protect their project and protect their reputation.

StormVoid® • SureVoid® • Plumbing Protection Systems



Protecting projects for **45** years.

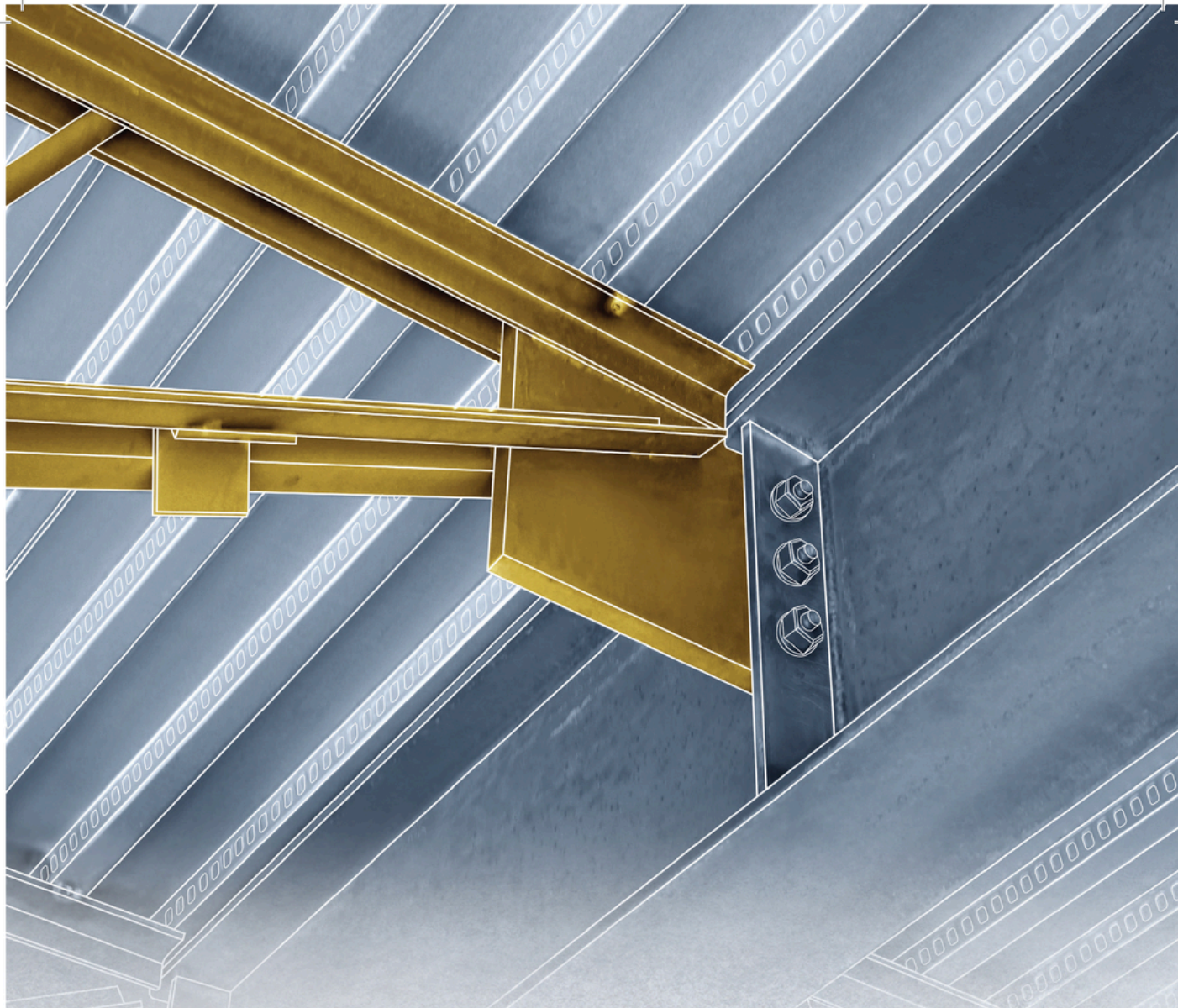
[Download new
product sheets and
specifications](#)



voidform.com • 888-704-VOID (8643)



FALL SEMINAR GOLD EXHIBITOR AD



**High-performance floor joist systems
with flush-frame connections.**

Way better, weigh less.



Simple to specify and design, steel floor joists with flush-frame connections provide performance equal to wide-flange beams—using up to 35% less steel. Lower material and installation costs while gaining impressive advantages.

10 big reasons why



newmill.com



FALL SEMINAR SILVER EXHIBITORS ADS

CONNECTING A CITY THROUGH EFFICIENT CONNECTIONS

The city of Houston needed a 600-foot pedestrian bridge constructed over one the busiest highways in America. Collaboration with Atlas Tube resulted in an efficient and successful outcome—all with little interruption to traffic.

- 600-foot span, built and delivered in three sections
- 1,216 Shuriken connections
- Galvanized per Texas DOT requirements

atlastube.com/houstonbridge



SIMPLIFY
YOUR
PROJECT



Atlas Tube
A ZIEGLER COMPANY

INNOVATE FREELY



**AIMS COMMUNITY COLLEGE
WELCOME CENTER** | Greeley, CO

Architect: Hord Coplan Macht
Structural Engineer: KL&A
Steel Fabricator: Zimmerman Metals Inc.



**CREATIVE.
INTEGRATED.
TRANSFORMATIVE.**

CAST CONNEX® engineers and supplies custom castings with structural performance, architectural value, and constructibility unachievable by conventional fabrication methods.

Customizable Solutions

- Simplify complex connections
- Ideal for architecturally exposed applications
- Resolve connections subject to very high loading or fatigue
- Economically address repetitive details with high-quality and consistency

CUSTOM CASTING

CASTCONNEX®
innovative components for inspired designs

www.castconnex.com
info@castconnex.com | 1-888-681-8786



FALL SEMINAR SILVER EXHIBITORS ADS

DEWALT

DDA[™]

DEWALT DESIGN ASSIST[™]



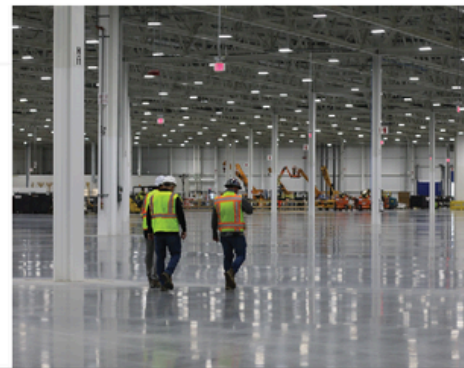
FOR MORE INFORMATION OR TO DOWNLOAD NOW
log on to <http://anchors.DEWALT.com/dda>

Copyright © 2022 DEWALT
The yellow/black color scheme is a trademark for DEWALT power tools, accessories, anchors and concrete adhesives.

STATE-OF-THE-ART STRUCTURAL DESIGN SOFTWARE



EUCLID CHEMICAL



PROVEN. CONCRETE. SOLUTIONS.

ENGINEERED SUPPORT FOR FRC SUCCESS

Partner with Euclid Chemical to maximize the performance of your fiber-reinforced concrete with expert mix design support, spec alignment, engineering tools, and on-site assistance—all backed by a comprehensive line of fiber solutions for any application.

- **TUF-STRAND[®] MACRO-SYNTHETIC FIBERS** offer an alternative to steel fibers, mesh, and light rebar in precast, slabs, decks, and shotcrete.
- **PSI FIBERSTRAND[®] MICRO-SYNTHETIC FIBERS** control plastic shrinkage cracking, ideal for secondary reinforcement in slabs and precast.
- **PSI STEEL AND BLENDED FIBERS** are used mainly for temperature and shrinkage crack control, with limited structural use in precast, slabs, elevated decks, and shotcrete.



FALL SEMINAR SILVER EXHIBITORS ADS

STREAMLINE STEEL DECK DIAPHRAGM DESIGN

Diaphragm Design module in PROFIS Engineering



Optimize your fastening pattern and help reduce your design time for your steel decking projects with the newly enhanced Diaphragm Design module, now available in PROFIS Engineering Software Suite.

Let's work together to start your steel deck diaphragm designs off right with a improved workflow and increased productivity. We can help with suggestions for deck gauge, frame-fastener, and sidelap connections based on input load capacities, assisting you to streamline processes, optimize design, and save on costs. With Diaphragm Design module you can:

- Specify multiple mechanical fastener types for steel deck attachment.
- Compare fastening methods side-by-side to select the best fastening solution for your steel deck projects.
- Find the best-suited fastener for your application and utilize the full system for greater productivity and performance

DISCOVER PROFIS

COMPLETE SOLUTIONS FOR YOUR STEEL DECK

We have your projects covered from design to installation with PROFIS and our steel deck full system solutions. Let's work together to help deliver more productivity to your projects — from start to finish.



PROFIS ENGINEERING BENEFITS



ADVANCED DESIGN EFFICIENCY —
COMPARE DESIGNS USING WELDS VERSUS MECHANICAL FASTENERS



REDUCE COST — SAVE UP TO 15% IN LABOR AND MATERIAL WITH IMPROVED FASTENER DESIGN



TRANSITION YOUR DESIGN TO HILTI FASTENERS FOR OPTIMAL PERFORMANCE IN HIGH WIND AND SEISMIC AREAS



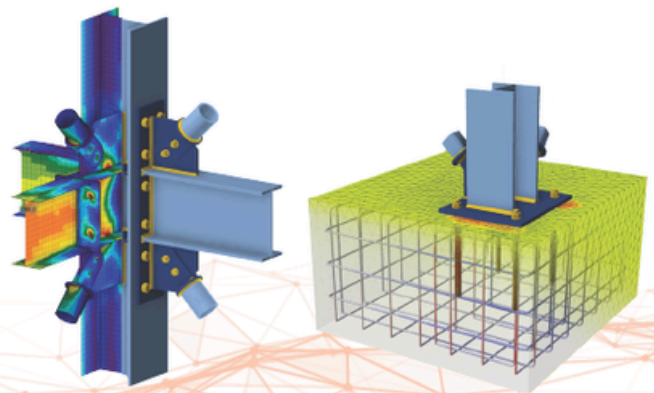
INCREASE PRODUCTIVITY UP TO 40-50% COMPARED TO MANUAL CALCULATIONS

POWERFUL STEEL AND CONCRETE DESIGN AT YOUR FINGERTIPS

IDEA StatiCa®

Calculate yesterday's estimates

- ✓ Connection design at its best
- ✓ Steel anchorage workflow
- ✓ Supplement your strut and tie analysis
- ✓ Any geometry, any loading, in minutes
- ✓ Intergates with your software



www.ideastatica.com

Try the full version for 14 days for free





FALL SEMINAR SILVER EXHIBITORS ADS

FOUNDATION SPECIALIST SINCE 1981



- Helical Piers (ICC Certified)
- Micropiles
- New Foundation Support
- Underpinning
- Tiebacks/Soil Nails



PARK RANGE
CONSTRUCTION, INC.

303.781.8936

E: info@parkrangeconstruction.com

W: www.parkrangeconstruction.com



3G Adhesive Family Bonded by versatility.

Handle any job with the Simpson Strong-Tie® 3G family of epoxy and hybrid acrylic anchoring adhesives. Code listed for cracked and uncracked concrete, they're easy to install and provide a high-strength hold. SET-3G™ epoxy is our most versatile adhesive with ultimate bond strength for heavy-duty, structural work. Choose ET-3G™ epoxy for general rebar doweling and threaded rod. For a fast-cure option, AT-3G™ hybrid acrylic allows same-day bolt-up in a wide range of temperatures, including extreme cold. Stocked nationwide at local retailers, our adhesives are backed by expert service and technical support.

To learn more about our entire line of 3G adhesive anchors, installation tools and accessories, visit go.strongtie.com/3G or call (800) 999-5099.

SIMPSON
Strong-Tie

Anchoring Solutions | Products, Software and Service for Smarter Building



FALL SEMINAR SILVER EXHIBITORS ADS



Designing a wood building? Ask me anything.

Emmy Hoa Tran, PE

Regional Director, CO, MT, NE, WY, ND, SD

Nationwide support for the code-compliant design,
engineering and construction of commercial and
multi-family wood buildings / woodworks.org



FREE PROJECT SUPPORT / EDUCATION / RESOURCES



SEAC NEWSLETTER ADS

YOUR ADVERTISEMENT HERE

Do you want to promote your company and build name recognition with structural engineers in Colorado?

Do you have an engineering job opening at your firm and are looking for a qualified candidate?

Consider advertising with SEAC.

SEAC publications reach over 300 members monthly - professional engineers, suppliers, and vendors. Employment ads are posted on the SEAC webpage for two months, in one bi-monthly SEAC Newsletter and one bi-monthly SEAC E-News Blast (two months posting). Contact Dawn Miller at administrator@seacolorado.org

EMPLOYMENT ADS

Full Page	Members: \$250	Non Members: \$300
1/2 Page	Members: \$150	Non Members: \$180
1/4 Page	Members: \$100	Non Members: \$120

PROMOTIONAL ADS

Full Page: \$350 1/2 Page: \$250 1/4 Page: \$200



SEAC COMMITTEES

Active Committees

*Click on a committee name to visit that committee's homepage on SEAC's website or
Click an email address to contact a committee chair directly.*

Committee	Chairperson	Contact Email
Building Department Board Liaison: Max Lehman	Open	
Business Management Board Liaison: Max Lehman	Lacey Goetz	lacey@integralengineeringco.com
Education Board Liaison: Jim Foreman	Mere Hall Philip Taylor	education@seacolorado.org
Existing Structures Board Liaison: Evan Hammel	Ben Cook Donald Harvey	ben.cook@jrharrisandco.com dharvey@ana-usa.com
Fall Seminar Planning Board Liaison: Scott Hargrove	Holly Janowicz Scott Hargrove	holly.janowicz@jrharrisandco.com shargrove@knottlab.com
Nominating Board Liaison: Scott Hargrove	Ben Nelson	bnelson@martinmartin.com
Northern Colorado Board Liaison: Scott Hargrove	Eric Richards Max Loeb	NOCO@seacolorado.org
Outreach Board Liaison: McKenzie Glass	Brian Lobmeyer	brian.lobmeyer@kpff.com
Scholarship Fund Board Liaison: Evan Hammel	Ben Nelson	scholarship@seacolorado.org
SE3 Board Liaison: Jordan Jarrett	Meg Riley	SE3@seacolorado.org
SEER Board Liaison: McKenzie Glass	Mere Hall	SEER@seacolorado.org

Active Committees

Committee	Chairperson	Contact Email
Seismic Board Liaison: Jordan Jarrett	Rob Jackson Deniz Uludag	rob.jackson@amentum.com duludag@martinmartin.com
Steel Board Liaison: Jim Foreman	Sylvia Iverson	siverson@dwsteel.com
Sustainable Design Board Liaison: McKenzie Glass	Mike Lyons	mlyons@martinmartin.com
Western Slope Board Liaison: Scott Hargrove	Sara Mickus	sara@evolvestruct.com
Wind & Snow Board Liaison: Jordan Jarrett	Dale Statler Jeannette Torrents	dstatler@wje.com torrentsjeannette@gmail.com
Wood Board Liaison: Max Lehman	Jeremy Crandall Kirby Beegles	wood@seacolorado.org kbeegles@martinmartin.com
Young Members Board Liaison: Peter Marxhausen	Kamryn Froehle	ymg@seacolorado.org

Ad Hoc Committees

Click on a committee name to visit that committee's homepage on SEAC's website
or Click an email address to contact a committee chair directly.

Committee	Chairperson	Contact Email
BIM Committee Board Liaison: Max Lehman	Open	
Ethics Board Liaison: Peter Marxhausen	Peter Marxhausen	peter.marxhausen@gmail.com
Licensure & Continuing Education Board Liaison: Max Lehman	Brian Lobmeyer Chad Mitchell	brian.lobmeyer@kpff.com chad.mitchell@kpff.com
Membership Board Liaison: Evan Hammel	Matthew Hood	mhood@jirsahedrick.com
Structural Engineering Practice Board Liaison: Max Lehman	Ben Cook	ben.cook@jrharrisandco.com



2025 SEAC CALENDAR OF EVENTS

SEAC E-NEWS DEADLINES

October Issue - September 22, 2025

December Issue - November 24, 2025

SEAC NEWSLETTER DEADLINES

November Issue - October 27, 2025

GENERAL/ANNUAL MEETINGS | 7:30 AM

Annual Meeting September 25, 2025 | PPA Event Center

Fall Seminar November 6 | Westin Westminster

BUILDING DEPARTMENT COMMITTEE | 3:30 PM

Thursday September 25, 2025 | KPFF

Thursday November 20, 2025 | KPFF

BUSINESS MANAGEMENT COMMITTEE | 7:30 AM

Thursday October 9, 2025 | Martin/Martin

EXISTING STRUCTURES COMMITTEE | 8:00 AM

Tuesday October 14, 2025 | J.R. Harris

Tuesday December 9, 2025 | J.R. Harris

STEEL COMMITTEE | 7:30 AM

Wednesday September 17, 2025 | Martin/Martin

Wednesday October 15, 2025 | Martin/Martin

Wednesday November 19, 2025 | Martin/Martin

Wednesday December 17, 2025 | Martin/Martin

BOD MEETINGS | 8:30 AM

Thursday September 4, 2025 | Virtual

Thursday October 2, 2025 | Martin/Martin

Thursday October 30, 2025 | Virtual

SEISMIC COMMITTEE | 8:00 AM

Tuesday October 7, 2025 | Virtual

Tuesday December 2, 2025 | Virtual

WOOD COMMITTEE | 12:00 PM

Thursday October 16, 2025 | Lam-Wood

NOCO COMMITTEE | 7:30 - 9:00 AM

Thursday September 18, 2025 | FRCC

Thursday October 16, 2025 | FRCC

Thursday November 20, 2025 | FRCC

SUSTAINABLE DESIGN COMMITTEE | 1:15 PM

Tuesday October 7, 2025 | Virtual

Tuesday November 18, 2025 | Virtual

YMG COMMITTEE | 7:30 AM

Monday September 1, 2025 | Virtual

Monday October 6, 2025 | Virtual

Monday November 3, 2025 | Virtual

Monday December 1, 2025 | Virtual



2025 PROJECT PRESENTATION TOURS

CALL FOR 2025 SEAC PROJECT PRESENTATION AND TOUR IDEAS



The SEAC Education Committee is looking to showcase and tour your great construction projects that are going up around Colorado and have been designed by our SEAC engineers. Please contact us at education@seacolorado.org if you are interested in presenting your unique project to the SEAC Committee.



2025 SPONSORSHIP OPPORTUNITIES



[CLICK HERE](#) to View
[SEAC Sponsorship
Opportunities and Benefits](#)





2025 SEAC BOARD OF DIRECTORS

PRESIDENT



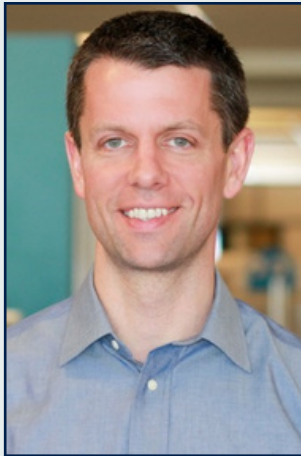
Jordan Jarrett, Ph.D., P.E.
Colorado State University

VICE PRESIDENT



Max Lehman, P.E., S.E.
Wallace Design Collective

SECRETARY



Jim Foreman, P.E., S.E.
Martin/Martin Inc.

DIRECTOR



**Peter Marxhausen, M.S.,
P.E., F.SEI**
Dux Forensics

PAST PRESIDENT



Scott Hargrove, M.S., P.E.
Knott Laboratory

DIRECTOR



McKenzie Glass, P.E.
City of Denver

DIRECTOR



Evan Hammel, M.S., P.E.
Structural Technologies