



NEWSLETTER



PRESIDENT'S MESSAGE

Max Lehman
Wallace Design Collective



With spring now in full swing across Colorado, longer days and warmer weather are finally here. This time of year always brings a renewed sense of energy, both professionally and personally. It is also a time when workloads tend to ramp up, deadlines stack together, and it becomes easy to move from one task to the next without much pause. As we head into the busy summer season, it is worth being intentional about stepping outside, recharging, and maintaining balance. A short break, even in the middle of a busy week, can go a long way in sustaining both perspective and performance.

At the same time, our profession continues to evolve in meaningful ways. Over the past few months, we have seen this through efforts like the Front Range Wind Map Update and ongoing work related to snow loads and existing structures. Increasingly, the role of the structural engineer is expanding beyond traditional load determination and code compliance into broader considerations of performance, resilience, and long term impact.

IN THIS EDITION

PRESIDENT'S MESSAGE

NCSEA SUMMIT FLASH SALE

SEAC MAY GENERAL MEETING

PROJECT DESIGN AWARDS

SEAC NOCO MAY MEETING

**SUMMER SOCIAL & CORN HOLE
TOURNAMENT**

EXHIBITOR/SPONSOR OPPORTUNITIES

SEAC SE3 MENTORSHIP PROGRAM

**BUILDING DEPARTMENT LIAISON
COMMITTEE**

JERRY GREY OBITUARY

SEANM MAY MEETING

WIND COMMITTEE FUNDRAISING

EMPLOYMENT ADS

SPONSORSHIP OPPORTUNITIES

FALL SEMINAR GOLD EXHIBITOR ADS

FALL SEMINAR SILVER EXHIBITOR ADS

2026 CALENDAR OF EVENTS

SEAC COMMITTEES

WELCOME NEW MEMBERS

Cooper Barnhart

Benesch

Emily Brightbill

Wiss, Janney, Elstner Associates,
Inc.

Carlo Citto

Ana-USA

Kevin Godderidge

Basecamp AEC

Nikolas Gomes

Gessner Engineering

Sarah Helm

JVA, Inc.

Jeffrey Olson

Goff Engineering

Sean Ruehl

Studio NYL

Hannah Schneeberger

Walter P. Moore

Jon Talley

Frontier Structural Engineering

Donald Taylor

Atkins Realis

The May General Meeting is a great example of this shift. The presentation on "Demystifying Embodied Carbon Assessment Using the New SEI Prestandard" will introduce the process of evaluating embodied carbon through a structured life cycle assessment approach. As sustainability continues to become a more prominent part of our projects, understanding how to incorporate these considerations into design will be an important step forward for our profession. I encourage you to attend and take part in the discussion.

Beyond technical programming, SEAC continues to focus on strengthening connections within our community. The Summer Social is coming up soon and will provide a great opportunity to step away from the day to day and connect with others in a more relaxed setting. We are also excited to see the launch of the SE3 Mentorship Program later this year, which will help foster relationships across experience levels and support both professional and personal growth within our membership.

The strength of SEAC comes from participation. Whether through attending meetings, joining a committee, mentoring others, or simply staying engaged, member involvement is what allows these initiatives to succeed and continue growing. As the profession evolves, it is important that we stay connected and actively contribute to shaping its direction .

Thank you for your continued involvement and support of SEAC. I look forward to seeing many of you at the May General Meeting and throughout the upcoming events this summer.



NCSEA SUMMIT FLASH SALE

NCSEA SUMMIT FLASH SALE

**10 DAYS ONLY.
MAY 5-15.
AFTER THAT, IT'S GONE.**



Structural Engineering Summit | October 27-30, 2026 | San Francisco, CA

The [NCSEA Structural Engineering Summit](#) is open for registration - and flash sale pricing occurs from May 5th - 15th. Ten days. Then it's over. Don't miss your chance to join us October 27-30 in San Francisco.

This is the one conference built exclusively for structural engineers. No filler. No fluff. Just the most important four days in the profession, in one of the greatest cities on earth.

**THIS FALL. SAN FRANCISCO.
YOUR COMMUNITY.**

Thank you to our sponsors!

- Up to **13 PDHs** - maximize your CE in four days
- **Technical sessions** from the leading experts in the field
- **90+ exhibitors** in the Exhibit Hall
- **1,000+ structural engineers** from across the county
- Events, mixers, and moments build around **real community**



REGISTER NOW



SEAC MAY GENERAL MEETING

Demystifying Embodied Carbon Assessment Using the New SEI Prestandard

Presented By:

Michael Lyons, P.E., LFA
Martin/Martin

PPA Event Center
2105 Decatur St. | Denver, CO 80211



MEMBERS
In-Person: \$0
Virtual: \$0

NON-MEMBERS
In-Person: \$75
Virtual: \$55

Fee includes breakfast (in-person only), presentation, and a certificate for 1.0 Professional Development Hour (PDH).
Registration Deadline: May 12, 2026.

21 **THURSDAY**
MAY
2026
7:30 AM - 9:00 AM



7:30 AM - 8:00 AM Breakfast/Networking

8:00 AM - 9:00 AM Presentation

ABOUT THE TOPIC

This presentation introduces the workflow for conducting an embodied carbon assessment, a specialized form of life cycle assessment. It will walk through the essential steps, highlight critical goal-setting and scoping considerations, and identify key decision points practitioners must navigate throughout the process. The newly released SEI Prestandard for Assessing the Embodied Carbon of Structural Systems will serve as a central reference, providing guidance and structure for the assessment approach.

MEETING
SPONSORED BY



ABOUT THE SPEAKER



Michael Lyons, P.E., LFA is a Senior Project Engineer/Structural Sustainability Lead at Martin/Martin. He has over 13 years of experience in the industry, focusing both on sustainability and the design of mid-rise commercial buildings. Michael Lyons sees embodied carbon as an exciting opportunity for the industry to develop as a design constraint. Mr. Lyons currently serves as the Chair of the SEAC Sustainable Design Committee and the co-chair of the SEI Sustainability Committee.

[CLICK HERE TO REGISTER NOW](#)



2026 PROJECT DESIGN AWARDS



2026 SEAC PROJECT DESIGN AWARDS



The SEAC Board of Directors is excited to announce the 2026 SEAC Project Design Awards! The inaugural year showcased many excellent projects and we cannot wait to see more! Each category winner will receive an award at the Annual Meeting and recognition on SEAC social media. The “Best Overall Project” will be selected from the category winners and will also win the submission fee for the 2027 [NCSEA SEE awards](#). The SEAC judging criteria and application align with the requirements of the NCSEA awards to streamline application to the national award.

CATEGORIES

- New Buildings, Non-residential
- New Buildings, Residential
- Forensic/Renovation/Retrofit/Rehabilitation Structures

Project stamping engineer must be a SEAC member.

Winners will be announced at the Annual Meeting.

Applications fee is \$50 per project.

Submissions are due by July 24, 2026.

[CLICK HERE](#) to learn more
and submit your project.



SEAC NOCO MAY GENERAL MEETING



NOCO

DEMYSTIFYING EMBODIED CARBON ASSESSMENT USING THE NEW SEI PRESTANDARD

Presented By:

Michael Lyons, P.E., LFA - Martin/Martin

MAY 21, 2026

7:30 AM - 9:00 AM

1.0 PDH

**Front Range Community College | 4616 Shields Street - Room #207
Student Success Center - Mount Antero Building - Fort Collins, CO 80526**

REGISTRATION FEES

SEAC Members: \$0

Non-Members: \$20

Fee includes in-person presentation virtually broadcast from Denver and a certificate for 1.0 PDH.

ABOUT THE TOPIC

This presentation introduces the workflow for conducting an embodied carbon assessment, a specialized form of life cycle assessment. It will walk through the essential steps, highlight critical goal-setting and scoping considerations, and identify key decision points practitioners must navigate throughout the process. The newly released SEI Prestandard for Assessing the Embodied Carbon of Structural Systems will serve as a central reference, providing guidance and structure for the assessment approach.

THE DEADLINE TO REGISTER IS MAY 18, 2026.

ABOUT THE SPEAKER



Michael Lyons, P.E., LFA is a Senior Project Engineer/Structural Sustainability Lead at Martin/Martin. He has over 13 years of experience in the industry, focusing both on sustainability and the design of mid-rise commercial buildings. Michael Lyons sees embodied carbon as an exciting opportunity for the industry to develop as a design constraint. Mr. Lyons currently serves as the Chair of the SEAC Sustainable Design Committee and the co-chair of the SEI Sustainability Committee.

[CLICK HERE TO REGISTER NOW](#)



2026 SUMMER SOCIAL



Summer Social & Corn Hole Tournament

25 Thursday
June
2026
4:30 PM - 7:30 PM

ViewHouse Ballpark
2015 Market St.
Denver, CO 80205



Come enjoy a summer evening of corn hole, networking, food, and libations. Registration fee includes two drink tickets and appetizer buffet. You can register for the corn hole tournament as an individual or a team. If you register as an individual, you will be paired with another player to form teams. Limit of 24 teams. Register early!

Deadline to register is June 19, 2026.

CORN HOLE TOURNAMENT BEGINS AT 5:00 PM SHARP!

SEAC MEMBER	Social + Corn Hole: \$65	Social Only: \$45
NON-MEMBER	Social + Corn Hole: \$105	Social Only: \$65

SPONSORSHIP OPPORTUNITIES

Don't miss this opportunity to mix & mingle with the engineers of SEAC.

Corn Hole Sponsor - \$1000 (limit 3)

- Sponsor sign at corn hole station
- 8 branded corn hole bags w/ company logo & SEAC logo for you to keep
- Company logo on event flyer, SEAC's website, and SEAC's social media
- Two complimentary social only registrations

Drink Sponsor - \$750

- Logo on drink tickets & social media
- One complimentary social only registration

Appetizer Sponsor - \$500

- Logo on table tents at buffet and picnic tables, and on social media
- One complimentary social only registration

Door Prize Sponsor - \$200

- Logo on social media
- Acknowledgment of sponsor at meeting

SPONSORSHIP DEADLINE: MAY 29, 2026.

REGISTER NOW



FALL SEMINAR EXHIBITORS & SPONSORS



SEAC & SEI Colorado 2026 FALL SEMINAR

15 THURSDAY
OCTOBER
2026
7:00 AM - 6:30 PM

EXHIBITORS & SPONSORS

ANCHOR EXHIBITOR
\$4,500 (*Exclusive*)

GOLD EXHIBITOR
\$2,000 (*10 Remaining*)

SILVER EXHIBITOR
\$1,500 (*5 Remaining*)

LANYARD SPONSOR
\$1,500 (*Exclusive*)

LUNCH SPONSOR
\$1,250 (*Exclusive*)

HAPPY HOUR SPONSOR
\$1,000 (*2 Remaining*)

BREAKFAST SPONSOR
\$750

MARKETING SPONSOR
\$500

BREAK SPONSOR
\$250

[CLICK HERE TO REGISTER AS AN EXHIBITOR OR SPONSOR](#)



SEAC SE3 MENTORSHIP PROGRAM

MENTORSHIP PROGRAM

**Accepting
Participants!**

Mentorship Form



Why Participate?

SEAC SE3 Committee's new Mentorship Program is open to members of all experience levels. Whether you are looking to gain insights, build confidence, define your goals, or give back to the profession, the SEAC Mentorship Program offers structured opportunities for personal and professional advancement. Participants benefit from:

- Gaining guidance and perspective from experienced professionals
- Increasing connection within SEAC community and expanding your professional network outside of your company
- Providing an opportunity to share and expand your knowledge and experiences
- Enabling the learning and teaching of new tricks, cultivating a growth mindset, and brainstorming possible solutions
- Providing support to people who might be struggling

Program Timeline

The program runs on an annual cycle featuring training, a kickoff event, ongoing quarterly meetings, and an end-of-year review with re-matching opportunities as needed. Mentor meetings will start from the first of September 2026 and will continue through August 2027.

Who Should Join?

- Mentees: Emerging professionals, and mid-career engineers seeking guidance, connection, and focused development.
- Mentors: Established engineers eager to share their experiences, support the next generation, and strengthen the profession.

Join us in shaping the future of the structural engineering profession while building connections that last well beyond the program year. **SIGN-UP BY JUNE 15th** to participate in the inaugural SEAC Mentorship Program. Scan the QR code or email mentorship@seacolorado.org to express interest in participation or request additional information.

BUILDING DEPARTMENT LIAISON COMMITTEE

OVERVIEW

SEAC'S Building Department Liaison Committee's purpose is to act as a conduit for communication between practicing structural engineers and building code officials/AHJ's.

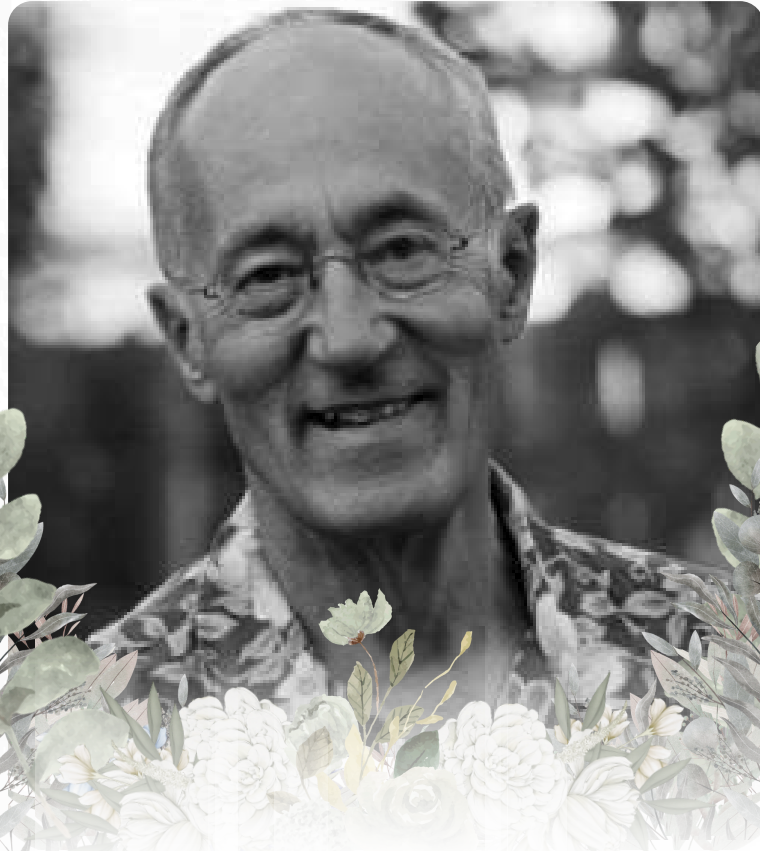
GOALS

- Maintain contact list for AHJ's
- Survey AHJ's for local amendments of building codes
- Help educate building officials about changes to the building codes

Please visit the SEAC website for committee meeting dates and times. You can contact the SEAC Building Department Committee at email BldgDeptCommittee@seacolorado.org



CELEBRATING THE LIFE OF



Jerry Bruce Grey

June 8, 1936 - March 19, 2026

Born in Missouri, Jerry spent most of his life in Colorado. He grew up in Colorado Springs and graduated from Palmer High School. He went on to earn degrees in architecture and structural engineering from the University of Colorado Boulder. Jerry had a distinguished career and was proud of his contributions to the Denver skyline and the redevelopment of historical areas. He was also a faithful reader of the Denver Post, never missing a day. He was a good friend.

Jerry is survived by his daughter, Kristen; his son, Jeff; and his grandchildren, Johnny and Presley. He took great joy in providing for his family and spending time with them. He loved and cared for them always.

An avid outdoorsman, Jerry loved spending time in all parts of Colorado. Those wishing to honor his life may make a donation in his name to The Nature Conservancy.



SEANM MAY MEETING

Tickets

Members: \$0

Non-Members: \$20

Date

May 13, 2026

12:00 PM – 1:00 PM

Virtual Teams

[**REGISTER NOW**](#)



UNIVERSITY OF NEW MEXICO COMPREHENSIVE CANCER CENTER RADIATION ONCOLOGY EXPANSION

SEAC Members use discount code “SEACMEMBER” when registering

Sam Sweetland, PE, Principal, Senior Structural Engineer at Chavez Grieves, a Salas O'Brien Company, will present on the structural design of the University of New Mexico Comprehensive Cancer Center Radiation Oncology Expansion. This presentation will focus on the design and construction of radiation therapy vaults, where shielding requirements driven by medical physics govern wall thickness, geometry, and system selection. Multiple vault strategies used on the project—including cast-in-place concrete, high-density modular block systems, and lead-lined retrofits—will be compared, along with their respective structural and constructability implications. The presentation will also cover the design of deep foundation systems supporting these high-load structures, including the application of ASTM D8169 bi-directional load testing for augercast piles in lieu of traditional testing via ASTM D1143.



Sam Sweetland, PE

Principal, Senior Structural Engineer – Chavez Grieves, a Salas O'Brien Company

Sam joined Chavez Grieves in 2000 and is now a Principal at Chavez Grieves, a Salas O'Brien Company. He is an experienced structural engineer who has led complex, large-scale projects across the United States, including the Bernalillo County Metropolitan Courthouse, Isotopes Park, and the National Security Sciences Building at Los Alamos National Laboratory.

With expertise in both Design-Bid-Build and Design-Build delivery, Sam excels at coordinating multidisciplinary teams, solving technical challenges, and delivering successful outcomes. Raised in his family's construction business, he combines hands-on field experience with engineering precision to create practical, cost-effective structural solutions.



SEAC WIND COMMITTEE STUDY



Wind Committee

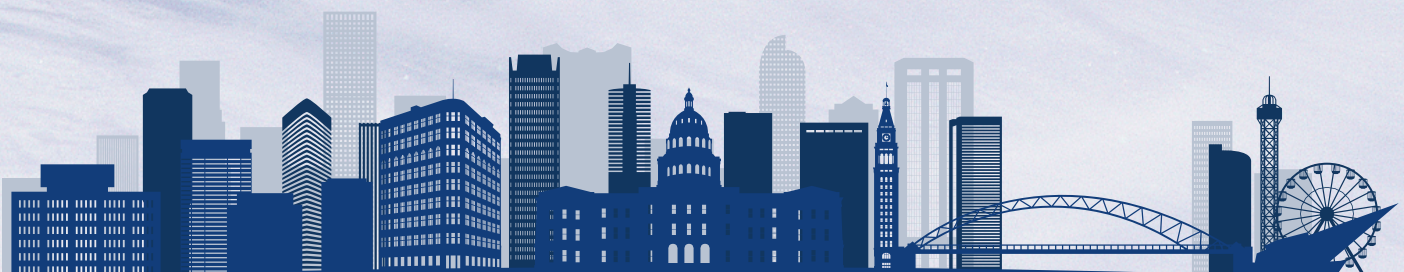
fundraising

The SEAC Wind Committee has partnered with CPP, who has recently completed a study to correctly define and fully cover the Front Range Special Wind Region (SWR). CPP is now working hard to get the results incorporated into ASCE 7-28.

Funding for the project is partially covered by FEMA BRIC grant, which will cover 75% of the project costs. SEAC needs to cover the remaining 25% of the project, and to date, we have received commitments for ~85% of those funds. Huge thank you to our SEAC community members that have already donated!

We will continue fundraising during the first half of 2026 for the remainder of our goal, so there is still time to be involved in this crucial study! Any sponsors at Bronze Level or higher will receive recognition for their contribution through SEAC. Any funds raised beyond the minimum required will help fund additional studies.

[CLICK HERE TO DONATE TO THE STUDY](#)





EMPLOYMENT AD

Help Us Build What's Next

VAIL

Colorado

MARTIN/MARTIN
CONSULTING ENGINEERS

OPEN POSITIONS:

- **Structural - Engineer in Training I/II**
 - \$77,000 - \$91,000 annually
- **Structural - Mid-level Engineer**
 - \$94,000 - \$115,000 annually
- **Investigative Professional Engineer**
 - \$100,000 - \$120,000 annually

At Martin/Martin, great design starts with great people. In our Vail office, you'll work on award-winning structural and civil engineering projects while living in one of Colorado's most iconic mountain communities—steps from skiing, hiking, and year-round alpine events.

If you want to do meaningful, high-level work in a place that inspires you every day, join a team that invests in your growth and values the communities we serve.

Visit martinmartin.com/careers to learn more.

Our Projects

Careers

Benefits/Perks





EMPLOYMENT AD

S. A. MIRO, INC.
IS LOOKING FOR

CIVIL + STRUCTURAL ENGINEERS



Check out our website to view all open opportunities!
www.samiro.com

- **Structural Project Engineer**
5+ years of experience
\$95,000 - \$115,000
- **Structural Engineer**
2+ years of experience
\$75,000 - \$95,000
- **BIM Specialist II**
3+ years of experience
\$75,000 - \$85,000

At S. A. Miro, Inc., we specialize in providing structural and civil engineering solutions to both public and private sector clients. Founded by renowned structural engineer Sami A. Miro, our firm has built a reputation for pushing the boundaries of what is possible in engineering. For over four decades, we've delivered results that are not only cost-effective but also innovative, setting new standards in the consulting engineering industry.



Country Club Towers | Denver, CO



SAVE THE DATE



SEAC & SEI Colorado



STRUCTURAL
ENGINEERING
INSTITUTE
Colorado Chapter

2026 Fall Seminar

15 THURSDAY
OCTOBER
2026
7:00 AM - 5:30 PM

Westin Westminster
10600 Westminster Blvd.
Westminster, CO 80020

Registration opens soon



2026 SPONSORSHIP OPPORTUNITIES



[CLICK HERE](#) to View
SEAC Sponsorship
Opportunities and Benefits





FALL SEMINAR EXHIBITORS

FALL SEMINAR GOLD EXHIBITORS



FALL SEMINAR SILVER EXHIBITORS



EUCLID CHEMICAL

BREAK SPONSORS



EUCLID CHEMICAL



FALL SEMINAR GOLD EXHIBITOR

Lam-Wood Systems, Inc.

Distributing Engineered Wood Products and Heavy Timber
across North America for over 48 years




New Product Spotlight

MASS TIMBER STAIR & ELEVATOR CORES

- Conventional Framing
 - I-joint, LVL/LSL, Open Web Joists, Plated Wood Trusses
- Heavy/Mass Timber
 - Glulam, Timber, CLT, MPP, T&G Decking, Logs, Assembled Trusses
- Support Services
 - Design Assist, Engineering, Project Management, 3D Modeling and Coordination

- Panels arrive pre-cut, sequenced, and ready to install
- Rapid erection with a single crew
- Significant schedule savings over CMU
- Simple half lap splices and connections
- Single-trade coordination
- Install mass timber cores in any season
- One inspection minimizes schedule delays



 303-458-1736

 info@lamwood.com

 <https://lamwood.com>



FALL SEMINAR GOLD EXHIBITOR

When your spreadsheets stop scaling with your practice.

Concrete Beam PRINT CANCEL CLONE SAVE SAVE & CLOSE

24.0 ft 12.0 ft

Concrete Beam Concrete Beam

Click on \pm to Add, Delete Spans Click on Span to Select

General Beam Span Data Span Loads Loads All Spans Load Combs

Select Span: 1 2

Span Length = 24 ft

Total Height = 28.0 in

Stem Width = 16.0 in

Btm Flange Width = 32 in

Btm Flange Thick = 5 in

Section cut location = 0.000 ft

Start & End Distances measured from end of this span

Beam Shape:

Responsive Graphics

Rebar Locations, Sizes, Quantities

# Bars	Size #	Dist. of bar center... from...	Bar Position This Span	Start (ft)	End
3	8	2.0	Top	24.0	FL
2	8	2.0	Top	24.0	FL

Visible Code References IBC 2021, ASCE 7-22, ACI 318-19, TMS 402-16, AISI 360-16, NDS 2018, SDPWS 2021

Calculations 2D Diagram 3D

Summary Results Max. Combinations M-V-D Summary Support Reactions **Design OK**

Maximum Bending Stress Ratio = 0.636 < 1

Section used for this span

Mu-x : Applied -115.794 k-ft

Mn * Phi : Allowable 182.114 k-ft

Load Combination +1.400

Location of maximum on span 0.000 ft

Span # where maximum occurs Span # 2

Deflection Ratios

Transient Load Deflection

Max Downward	0.000 in	Ratio =	0 >= 360
Max Upward	0.000 in	Ratio =	0 >= 360

Total Deflection

Max Downward	0.093 in	Ratio =	3087 >= 240
Max Upward	-0.006 in	Ratio =	24103 >= 240

Extreme Reactions (kips)

	D	Lr	L	S	W	E	H
Support #1	15.06						
Support #2	37.53						
Support #3	2.55						

Clear Pass/Fail Result

Detailed Outputs

Professional tools for professional engineering.

30-day FREE Trial | enercalc.com



ENERCALC

SINCE 1982



FALL SEMINAR SILVER EXHIBITORS

PENETRON ADMIX

CRYSTALLINE WATERPROOFING ADMIXTURE

SB Non-pigmented Soluble Bags

RP QC: Red Pigment Optional

1 DOSAGE RATE
BAG PER YARD



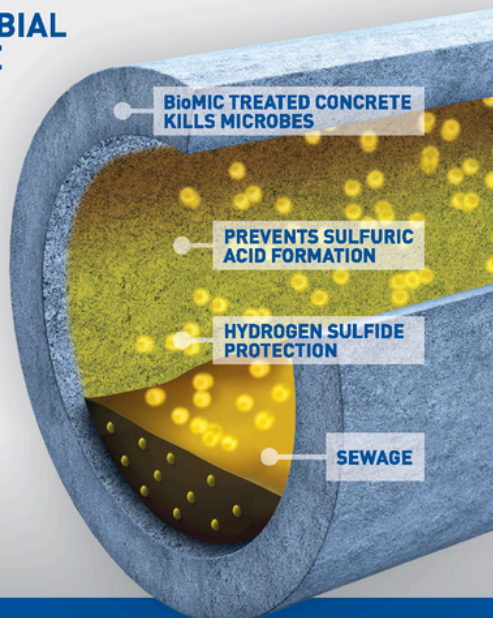
PENETRON.COM
+1 631 941 9700

BioMIC

ANTIMICROBIAL ADMIXTURE

Acidic
Sewer
Gas
Protection

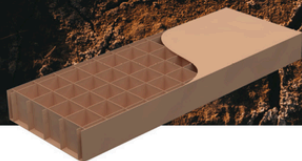
Kills
99.9%
of Bacteria



PENETRON®

Expansive Soil Damages Concrete.

Colorado's clay soil can damage concrete and below-slab utilities as it expands and contracts with changing moisture levels. Protect your project with void systems that are simple to specify and quick to install.



SureVoid®



StormVoid®

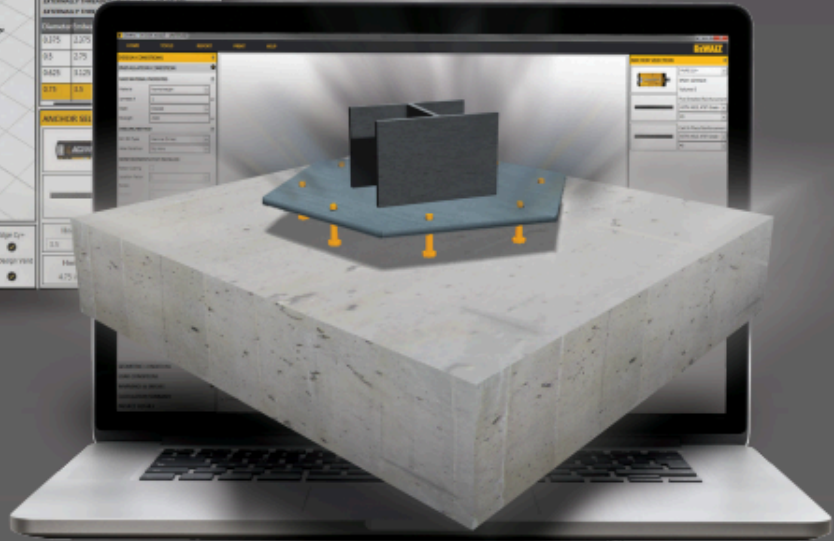


PlumbingVoid®



**DESIGN****COMPARE****DOCUMENT****ANCHOR****CODE COMPLIANCES**

ACI 318-19
 ACI 318-14
 CSA A23.3-19
 CSA A23.3-14

**ANCHOR TYPES****MECHANICAL****ADHESIVES****CAST-IN-PLACE**

Designing a wood building? Ask me anything.

Emmy Hoa Tran, PE
 Regional Director, CO, MT, NE, WY, ND, SD

Nationwide support for the code-compliant design, engineering and construction of commercial and multi-family wood buildings / woodworks.org



FREE PROJECT SUPPORT / EDUCATION / RESOURCES



2026 SEAC CALENDAR OF EVENTS

SEAC NEWSLETTER DEADLINES

July Issue - June 22, 2026

September Issue - August 24, 2026

November Issue - October 26, 2026

SEAC E-NEWS DEADLINES

June Issue - May 25, 2026

August Issue - July 27, 2026

October Issue - September 21, 2026

December Issue - November 23, 2026

BOD MEETINGS | 8:30 AM

Thursday May 14, 2026

Thursday June 4, 2026

Thursday July 9, 2026

Thursday July 30, 2026

Thursday September 3, 2026

Thursday October 1, 2026

Thursday November 5, 3036

GENERAL MEETINGS | 7:30 AM

May 21, 2026 PPA Event Center

July 16, 2026 PPA Event Center

September 17 PPA Event Center

Fall Seminar TBA

Annual Meeting TBA

BUSINESS MANAGEMENT COMMITTEE | 7:30 AM

Thursday June 11, 2026 | Martin/Martin

Thursday August 13, 2026 | Martin/Martin

Thursday October 8, 2026 | Martin/Martin

Thursday December 10, 2026 | Martin/Martin

SUSTAINABLE DESIGN COMMITTEE | 12:00 PM

Wednesday June 3, 2026 | Virtual

Wednesday September 30, 2026 | Virtual

Wednesday November 11, 2026 | Virtual

WOOD COMMITTEE | 12:00 PM

Thursday June 18, 2026 | Lam-Wood

Thursday August 20, 2026 | Lam-Wood

Thursday October 15, 2026 | Lam-Wood

Thursday December 17, 2026 | Lam-Wood



EDUCATION COMMITTEE | 8:00 AM

Friday May 8, 2026 Teams Meeting

Friday June 12, 2026 Teams Meeting

Friday July 10, 2026 Teams Meeting

Friday August 14, 2026 Teams Meeting

Friday September 11, 2026 Teams Meeting

Friday October 9, 2026 Teams Meeting

Friday November 13, 2026 Teams Meeting

Friday December 11, 2026 Teams Meeting

NOCO COMMITTEE | 7:30 - 9:00 AM

Thursday May 21, 2026 | FRCC

Tuesday June 9, 2026 | FRCC

Thursday July 16, 2026 | FRCC

Tuesday August 11, 2026 | FRCC

Thursday September 11, 2026 | FRCC

Tuesday October 13, 2026 | FRCC



Structural Engineers Association of Colorado

YOUR ADVERTISEMENT HERE

Consider advertising with SEAC.

SEAC publications reach over 300 members monthly, including professional engineers, suppliers, and vendors.

Employment ads are posted on the SEAC webpage for two months. Both ad types will be included in one bi-monthly SEAC Newsletter and one bi-monthly SEAC E-News Blast (two months posting).

Contact Dawn Miller at administrator@seacolorado.org

EMPLOYMENT ADS

Full Page Employment Ad Members: \$250 Non Members: \$300

1/2 Page Employment Ad Members: \$150 Non Members: \$180

1/4 Page Employment Ad Members: \$100 Non Members: \$120

PROMOTIONAL AD

Full Page Promotional Ad: \$350

Half Page Promotional Ad: \$250

Quarter Page Promotional Ad: \$200



2026 PROJECT PRESENTATION TOURS

CALL FOR 2026 SEAC PROJECT PRESENTATION AND TOUR IDEAS



The SEAC Education Committee is looking to showcase and tour your great construction projects that are going up around Colorado and have been designed by our SEAC engineers.

Please contact us at

education@seacolorado.org

if you are interested in presenting your unique project to the SEAC Committee.



2026 SCHOLARSHIP DONATIONS

Donations are greatly appreciated, and we now have a Zelle option!

If you would like to pledge to the 2026 SEAC Scholarship Program, open your Zelle account and scan the QR code



[OR CLICK HERE FOR PLEDGE FORM](#)

If you would like a receipt for tax purposes, you must include your full name, physical address, and email address in the memo of the Zelle donation. If that information is not included with the donation, the donation will be classified as anonymous, and SEAC cannot retroactively collect receipt information.





SEAC COMMITTEES

Active Committees

Click on a committee name to visit that committee's homepage on SEAC's website or
Click an email address to contact a committee chair directly.

Committee	Chairperson	Contact Email
Business Management Board Liaison: Max Lehman	Lacey Goetz	lacey@integralengineeringco.com
Education Board Liaison: Jim Foreman	Jason McNeil McKenzie Brooks	education@seacolorado.org
Existing Structures Board Liaison: Evan Hammel	Ben Cook Donald Harvey	ben.cook@jrharrisandco.com dharvey@ana-usa.com
Fall Seminar Planning Board Liaison: Kamryn Miller	Scott Hargrove Mere Hall	shargrove@knottlab.com Merehall@gmail.com
Nominating Board Liaison: Kamryn Miller	Ben Nelson	bnelson@martinmartin.com
Northern Colorado Board Liaison: Jordan Jarrett	Eric Richards	NOCO@seacolorado.org
Outreach Board Liaison: Jordan Jarrett	Brian Lobmeyer	brian.lobmeyer@kpff.com
Scholarship Fund Board Liaison: Evan Hammel	Ben Nelson	scholarship@seacolorado.org
SE3 Board Liaison: Jordan Jarrett	Meg Riley	SE3@seacolorado.org
SEER Board Liaison: Jim Foreman	Mere Hall	SEER@seacolorado.org
Seismic Board Liaison: Jordan Jarrett	Jace Furley Lucas Vazquez	seismic@seacolorado.org

Active Committees

Committee	Chairperson	Contact Email
Steel Board Liaison: Jim Foreman	Sylvia Iverson	siverson@dwsteel.com
Sustainable Design Board Liaison: Ron Manske	Mike Lyons	mlyons@martinmartin.com
Western Slope Board Liaison: Ron Manske	Sara Mickus	sara@evolvestruct.com
Wind & Snow Board Liaison: Jordan Jarrett	Dale Statler Jeannette Torrents	dstatler@wje.com torrentsjeannette@gmail.com
Wood Board Liaison: Max Lehman	Jeremy Crandall Kirby Beegles	wood@seacolorado.org kbeegles@martinmartin.com
Young Members Board Liaison: Peter Marxhausen	Nicholas Bass	ymsg@seacolorado.org

Ad Hoc Committees

Click on a committee name to visit that committee's homepage on SEAC's website or Click an email address to contact a committee chair directly.

Committee	Chairperson	Contact Email
BIM Committee Board Liaison: Max Lehman	Open	
Building Department Board Liaison: Max Lehman	Chad Mitchell	chad.mitchell@smithgroup.com
Legislative and Ethics Committee Board Liaison: Peter Marxhausen	Peter Marxhausen	peter.marxhausen@gmail.com
Membership Board Liaison: Evan Hammel	Matthew Hood	mhood@jirsahedrick.com
Project Awards Board Liaison: Jordan Jarrett	Jordan Jarrett	jordan.jarrett@colostate.edu
Structural Engineering Practice Board Liaison: Max Lehman	Ben Cook	ben.cook@jrharrisandco.com



2026 SEAC BOARD OF DIRECTORS

2026 SEAC Board of Directors

PRESIDENT

VICE PRESIDENT

SECRETARY

DIRECTOR



**Max Lehman,
P.E., S.E.**
Wallace Design
Collective

**Jim Foreman, P.E.,
S.E.**
Martin/Martin Inc.

Kamryn Miller, P.E.
Simpson Strong-Tie

Ron Manske
HDR Engineering,
Inc.

PAST PRESIDENT

DIRECTOR

DIRECTOR



Jordan Jarrett, Ph.D., P.E.
Colorado State University

**Peter Marxhausen,
M.S., P.E., F.SEI**
Dux Forensics

Evan Hammel, M.S., P.E.
Structural Technologies